

**ACME**

# ACME JIG AND FIXTURES

PLACE OF ENGINEERING FOR INSPECTION , DESIGN , MACHINING FACILITY

---

## ACME JIG & FIXTURES

Address :-901/5/3,Opp. PakonaEng.,  
GIDC MAKARPURA , VADODARA , GUJARAT -INDIA -  
390010

Mobile:-+91 9860540067/7600873290

E-mail :-acmesales07@gmail.com/  
info@acmeengi.com

[www.acmeengi.com](http://www.acmeengi.com)

MACHINING

DESIGN

INSPECTION  
SERVICE

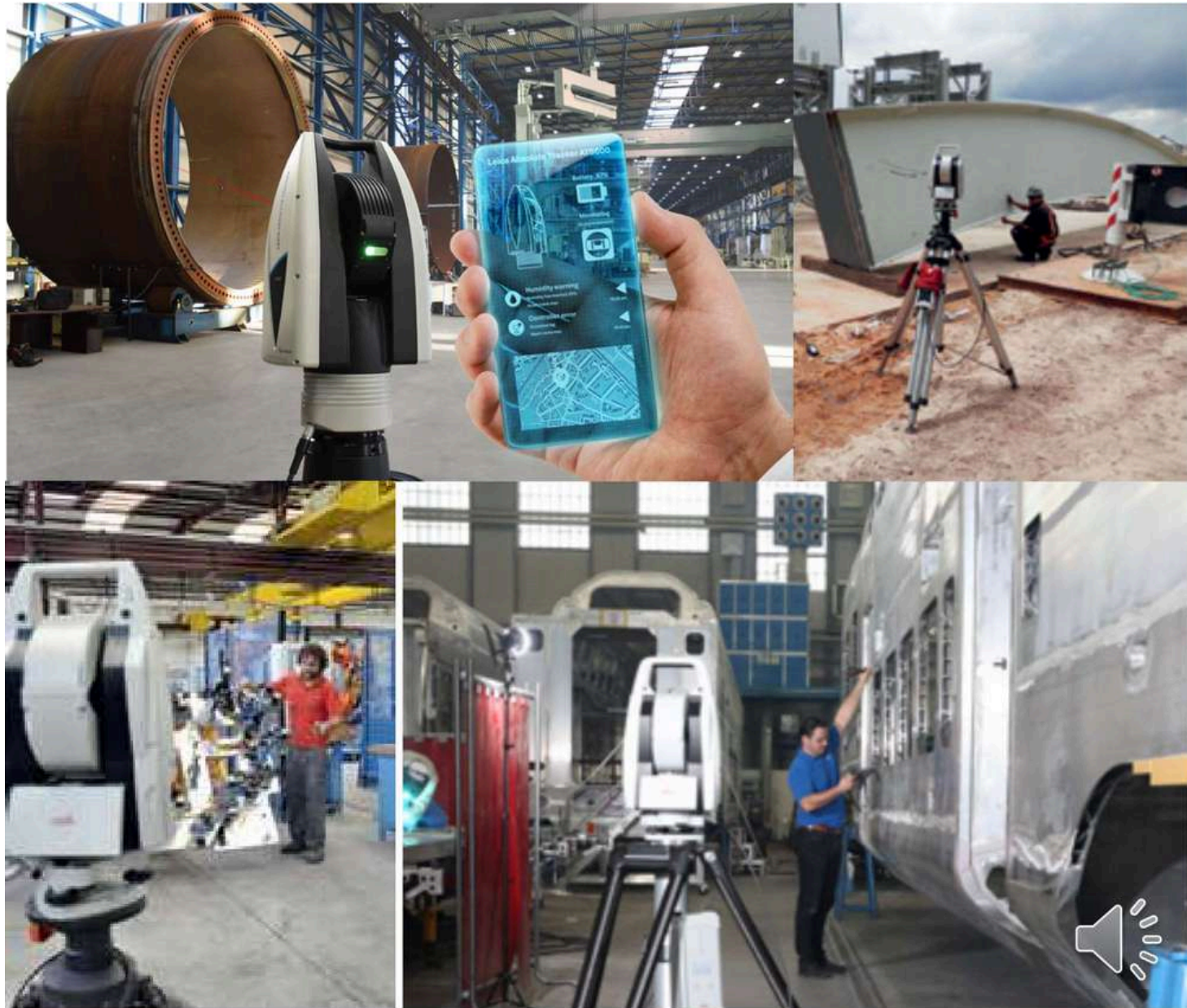
# Leica Absolute Tracker AT403

Absolute Productivity. Absolute  
Portability. Absolute Resilience.

Measure absolutely  
anything, absolutely  
anywhere



# Leica Absolute Tracker AT403



# Leica Absolute Tracker AT403 –About

Measure absolutely anything, absolutely anywhere, straight out of the box.

New all-in-one large-volume laser tracker system that sets a new standard for portability, simplicity, robust construction and measurement efficiency.

An all-in-one metrology solution more portable than any other on the market, the Leica Absolute Tracker AT403 from Hexagon Manufacturing Intelligence is a self-contained measurement workshop inside a compact and convenient single case.

**Reliable construction** -Temperatures ranging from -15 to 45 degrees Celsius .

**Improving efficiency**

**Outdoor alignment** -

A measurement volume up to 320 metres in diameter is augmented with RapidSighttargeting, the optical crosshair that allows for accurate alignment over long distances even in blinding outdoor conditions.

- Ultra-portable probing**
- Class-leading levelling**
- Enhanced portability**





# Absolute Arm 8325-7 axis with RS5 scanner CMM

## Absolute Arm

Usability | Versatility |  
Productivity | by design



# Absolute Arm 8325-7 axis with RS5 scanner CMM



## Absolute Arm 8325-7 axis with RS5 scanner CMM –About

The flagship of the Absolute Arm range, the Absolute Arm 7-Axis delivers tactile probing and laser scanning in a uniquely ergonomic package. It's the clear choice for high-end portable measurement applications. With usability central to its design, this is an articulating measuring arm that can't be beaten when it comes to ease of movement and ease of measurement.

Built-in versatility comes in the form of a uniquely modular wrist design, including an on-wrist display that puts control and results in the hands of the user. Choose between configurable grip shapes and sizes as well as a wide range of accessories, from probe tips and 3D optical scanners to complete measurement systems designed for specialised applications.

The flagship RS6 Laser Scanner is the key to high-end 3D scanning and digitisation, while our RS5 Laser Scanner offers established and reliable general-purpose scanning functionality. The ground-breaking RS-SQUARED Area Scanner offers a high-productivity alternative based on structured light scanning technology. Each can be quickly and easily mounted on the Absolute Arm 7-Axis by the user with no need for recalibration.

All this adds up to a far more productive and versatile arm that delivers high-accuracy measurement results more quickly and more easily than ever before.





# CROMA 8.10.6 – Bridge( fixed Bed) CMM

RANGE –

X 800 MM

Y 1000 MM

Z 600 MM

ACCURACY –2.4 MICRON /  
300 MM





## CROMA 8.10.6 –Bridge( fixed Bed) CMM-About -

All aluminium structure

Robust frame with hard anodised aerometalbeam and Z-axis offers temperature consistency as well as a reduced mass of moving parts and force of inertia to ensure high accuracy during high-speed movement.

Patented triangular beam

The triangular beam design offers a lower centre of gravity, better stiffness and more reliable motion compared to rectangular and cross beams.

Integral dovetail guide way

Integral dovetail guide way on Y-axis reduces the machine weight and helps prevent motional swings during the inspection process to ensure measuring accuracy and stability.

Self-cleaning air bearings

All three axes run on high-precision self-cleaning air bearings, providing smooth movement that reduces wear on the guide ways to maximise equipment durability and minimise repair costs.

High-precision optical scales

DC servo motors

Specially-designed control system



# Capacities and Capabilities

Sr. No	Machinery & Equipment Details	Make.	Range	Model	Qty.
1	VMC	JYOTI.	830X510X510 MM	VMC850	01
2	CNC Turning Center	JYOTI.	DIA. 200X500 MM	DX 200	01 Nos.
3	CNC Turning Center	ACE.	DIA. 165 X 300 MM	JM 300 LM	01 Nos.
4	PILLER DRILL MACHINE	CHIRAG.	DIA. 25 MM		01 Nos.
5	SURFACE GRINDER	KENT	300X600MM		01 Nos.
6	LATHE	ANIL.	DIA. 200 X 6 FEET		01 no.



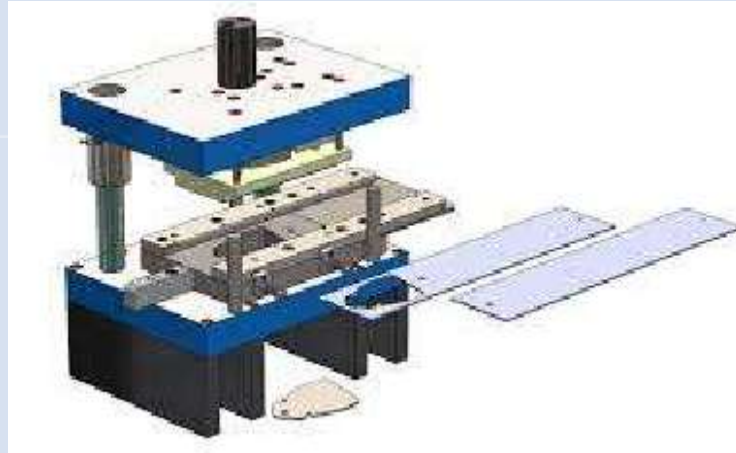
# QUALITY CONTROL

Sr. No	Machinery & Equipment Details
1	Fix bed CMM HEXAGON –CROMA 8.10.6 (Measuring Range X =800 mm, Y=1000 mm, Z= 600 mm With PC-DMIS SOFTWARE
2	Portable CMM -Absolute Arm 8325-7 axis with RS5 scanner CMM
3	Leica Absolute Tracker AT403
4	Surface Plate
5	All Required Measuring Instruments





# GALLERY

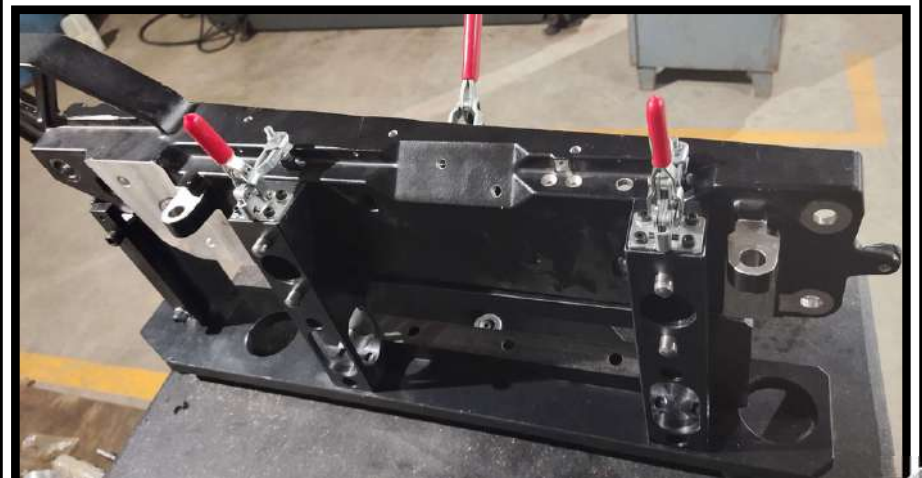
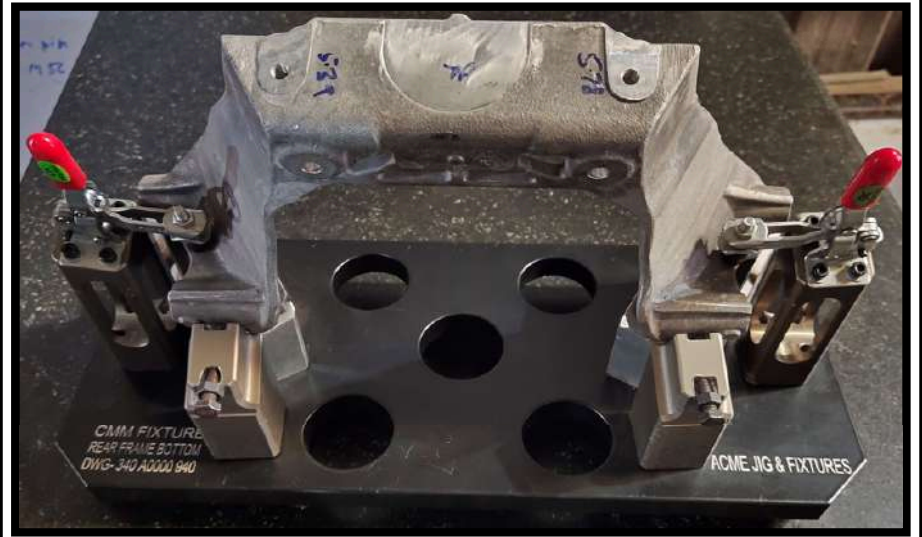
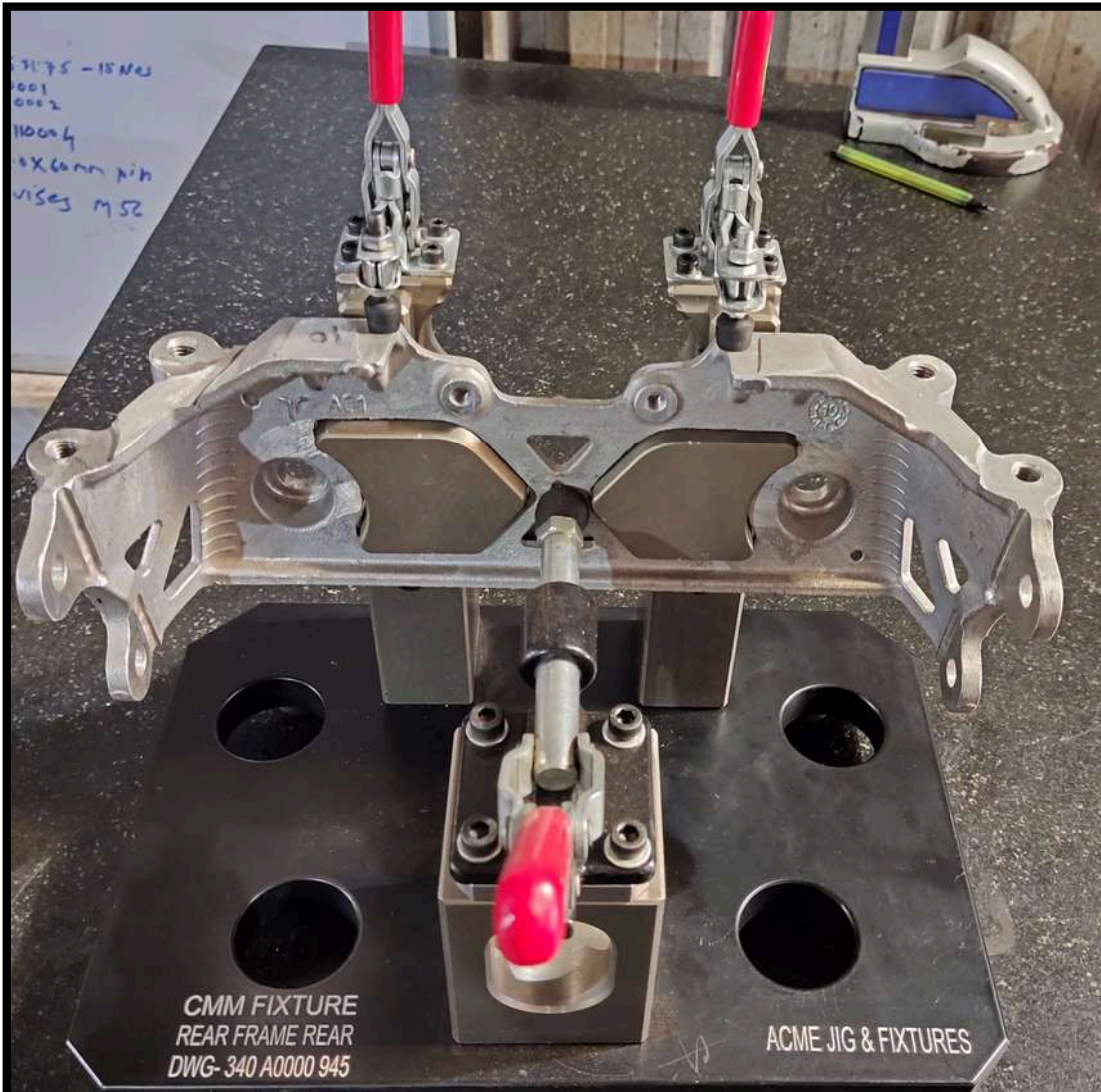




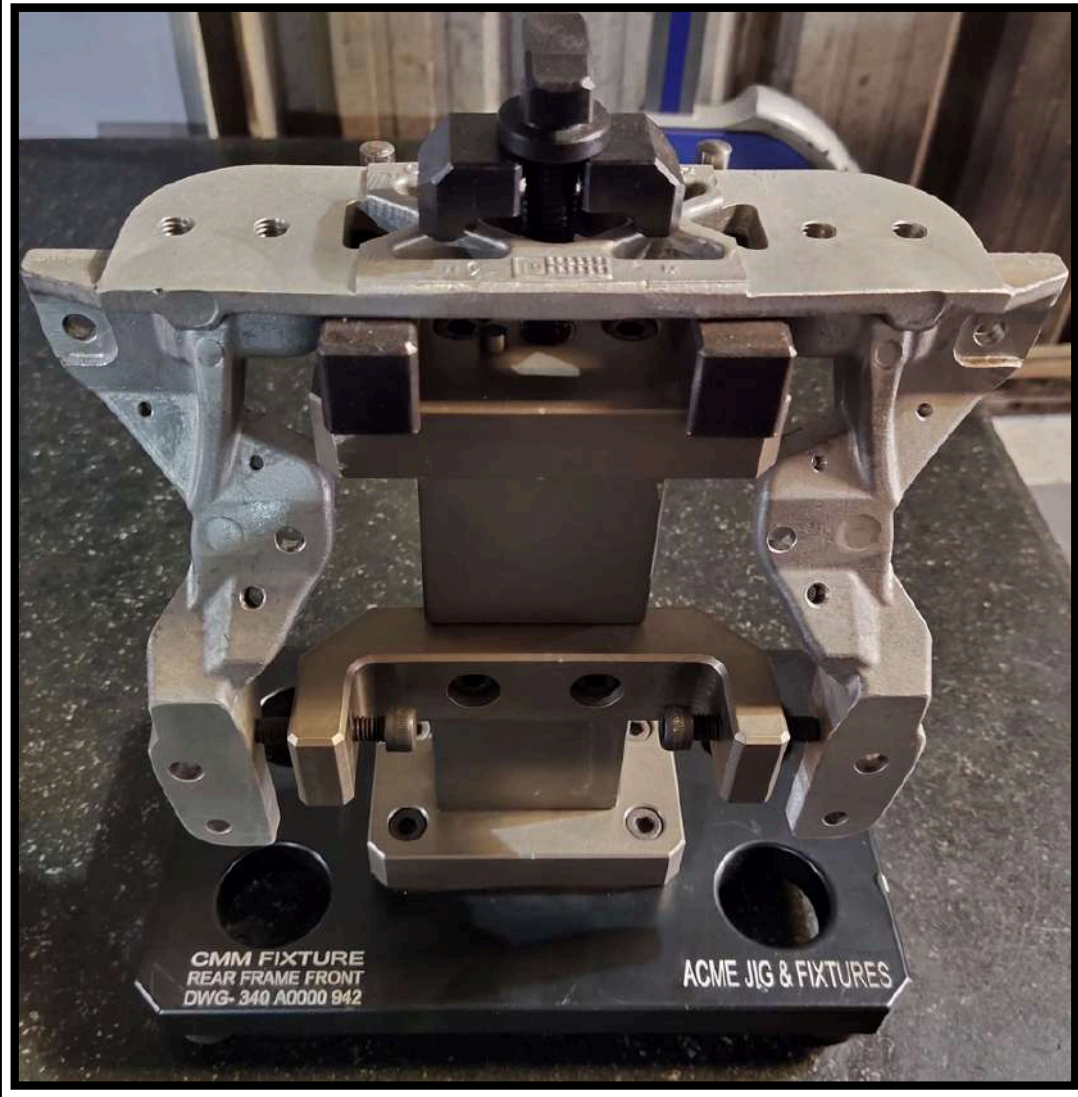




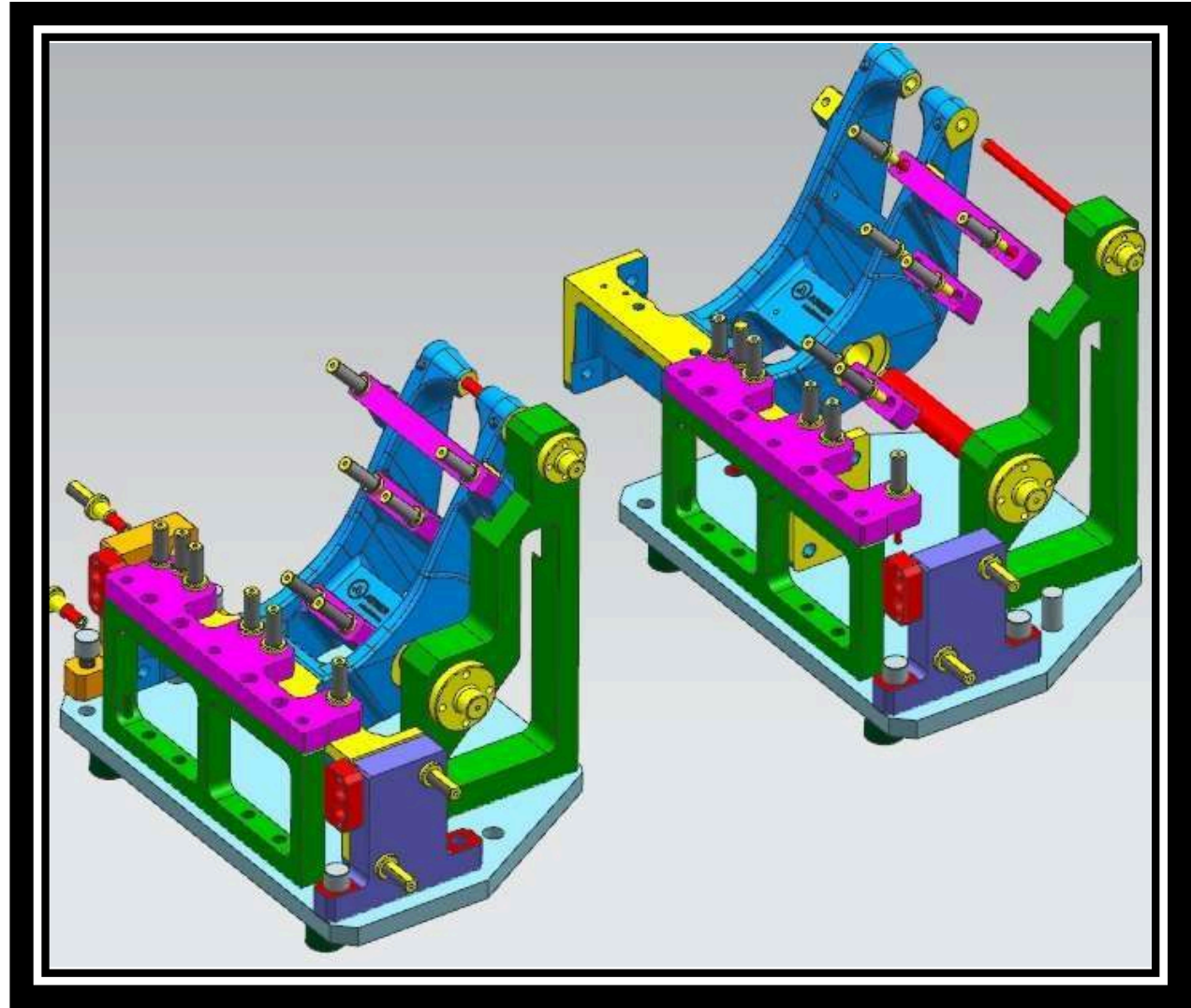






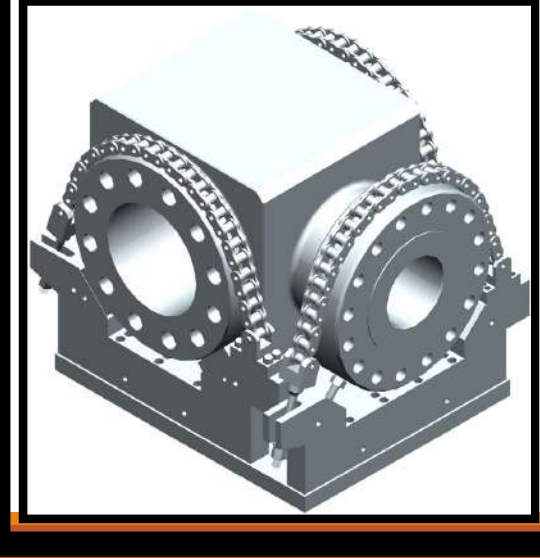
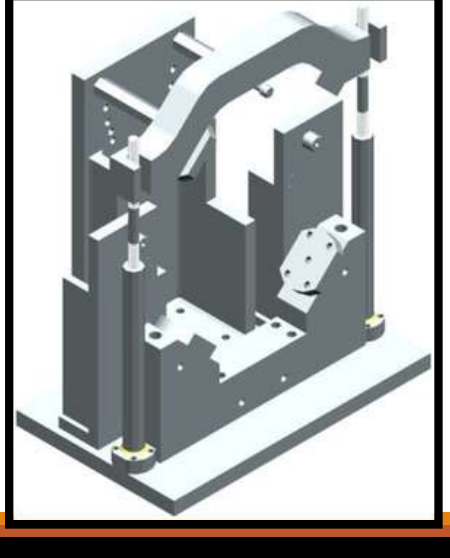
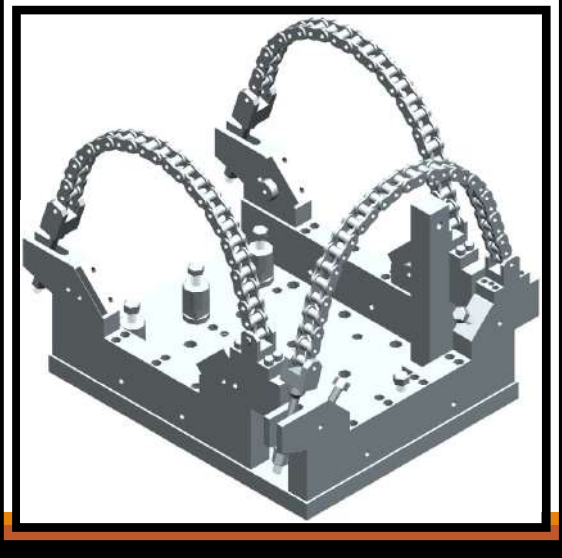
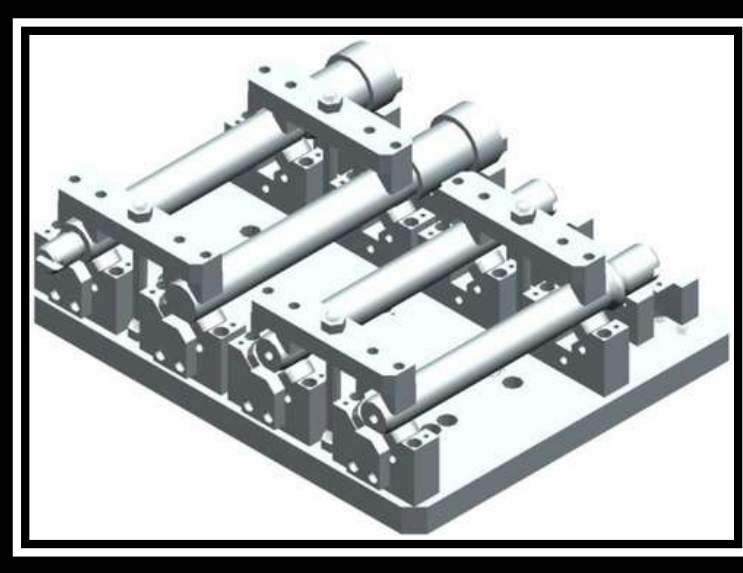
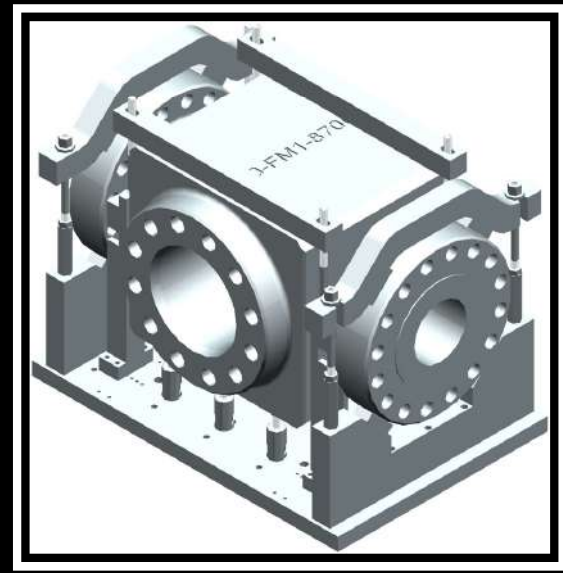
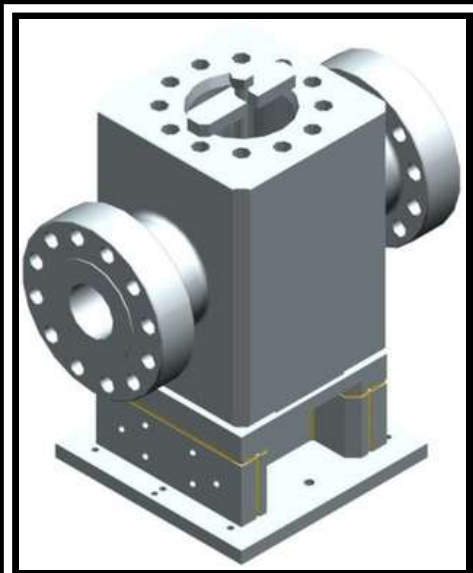












# AERA OF SERVICE

AUTOMOBILE  
INDUSTRY

AEROSPACE  
INDUSTRY

FOOD  
INDUSTRY

ENERGY &  
POWER  
PROJECTS

DEFENCE  
INDUSTRY





## CURRENTLY TYPE OF WORKING

ACME JIG AND FIXTURES is working in wide range of area with the various types of materials. .

- 1) Inspection Service –On Site & In house.
- 2) Design & Manufacturing –Fixtures, Drill Jig , checking fixtures, Special gauges etc.
- 3) Proto :-We provide the best and economical Proto Projects services to the customers for machining with casting(includes all kind of materials).
- 4) Glass Industry :-We provide all range of parts in special POLY,NYLON, PEEK, UHMWPE material.
- 5) Material Handling –As per The Customer requirements.
- 6) Pump Parts :-Expertise in pump parts.
- 7) Fasteners :-Special & Std. Fasteners
- 8) Job Work: -Machining Job Work, Fabrications Etc.
- 9) Foundry Tools –Patterns , Core Box , Moulding Line Parts Etc.
- 10) Tool Room :-As per Customers requirements we will provide Toolroom Services.





Thank You for your patience!!!

A solid orange horizontal bar at the bottom of the page.